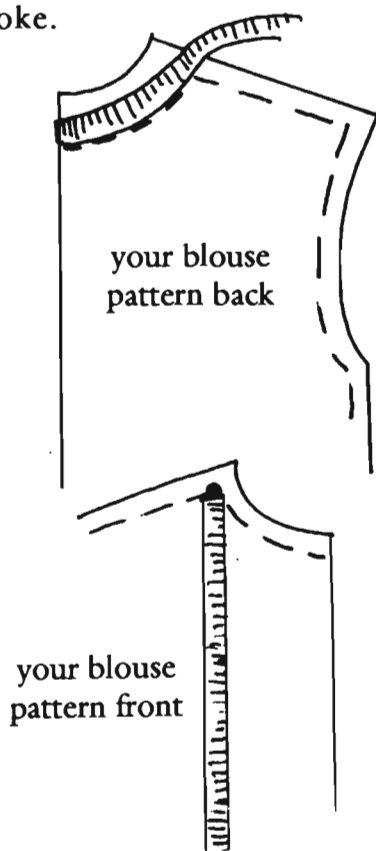


## *The Sewing Connection* Book V Template for Cascade Ruffle Closure.

This pattern is meant to be pinned to a basic blouse pattern of your own in order to change it to the same look as pictured. It is a variation of a shawl collar. Put away your collar and facing pattern pieces as this will substitute for them, forming a small stand up collar in back. The pattern you use should have a standard back and front joined by a shoulder seam. **Do not** use a pattern with a yoke.



Before beginning, lay a tape measure on edge on the back neck stitching line of your blouse. Compare your measurement with the template stitching line measurement ( $3\frac{1}{4}$ " ). Adjust the template longer or shorter so it matches yours.

Measure your front blouse pattern length from the shoulder-neck stitching line dot down to the bottom. Adjust the template ( $25\frac{5}{8}$ " ) longer or shorter so it matches up with your pattern.

Trace the template pieces on pattern tracer or cut these out and use as your patterns.

Cut one layer sheer interfacing for each template, sew in or fusible. If fusible, cut with the **fusible side down** while template print is up.

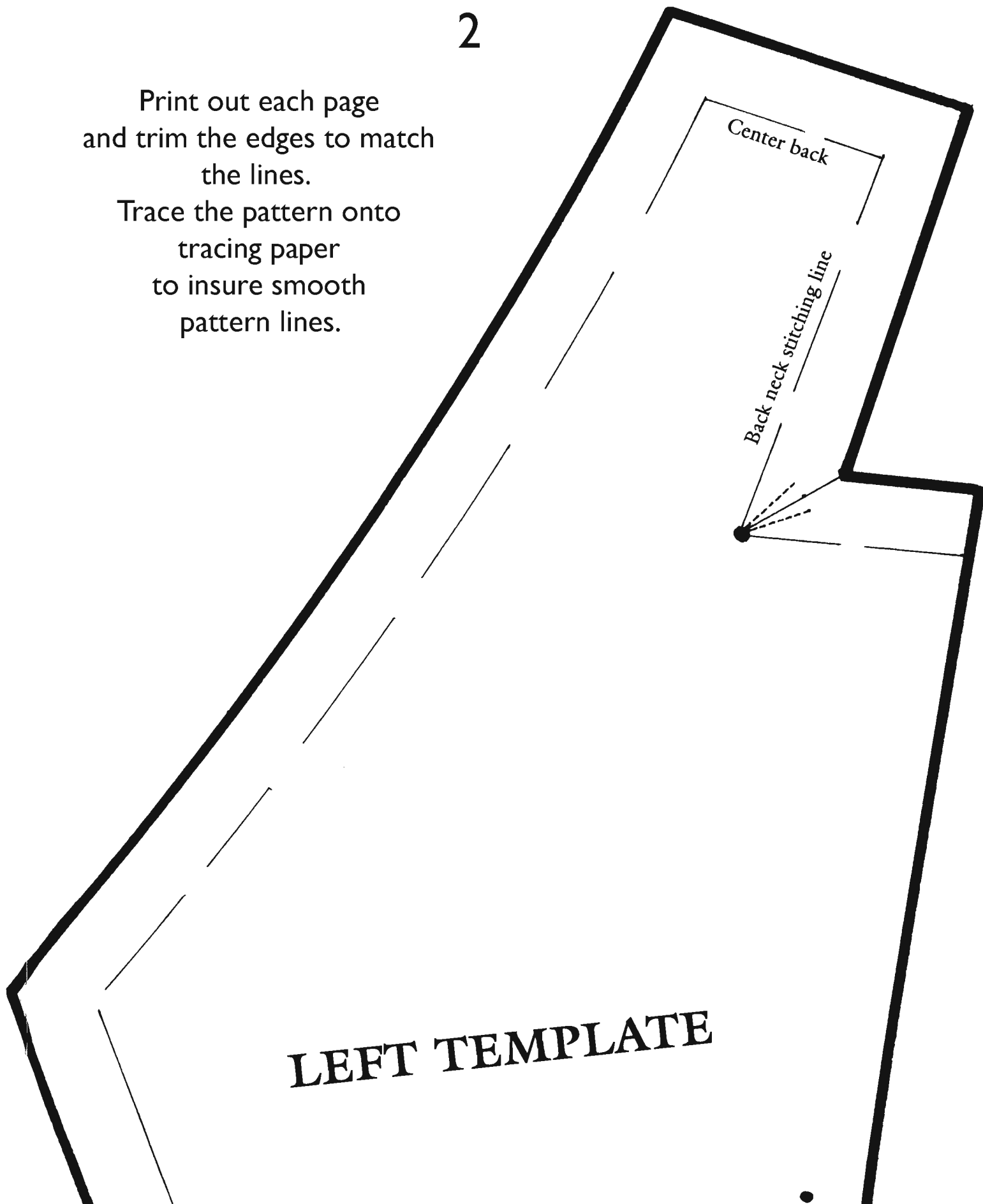
Cut one facing layer of each template with the **fabric right side down**. Fuse or staystitch the interfacing to the facing. This facing layer is also the inner collar.

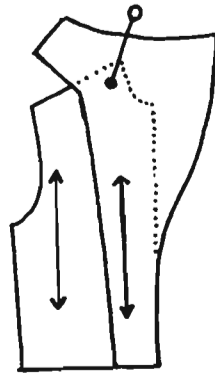
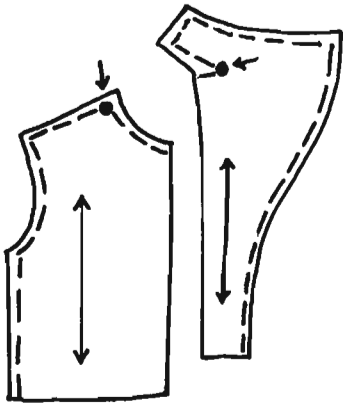
Pin the templates to your pattern (one at a time) to form the blouse front-outer collar units.

2

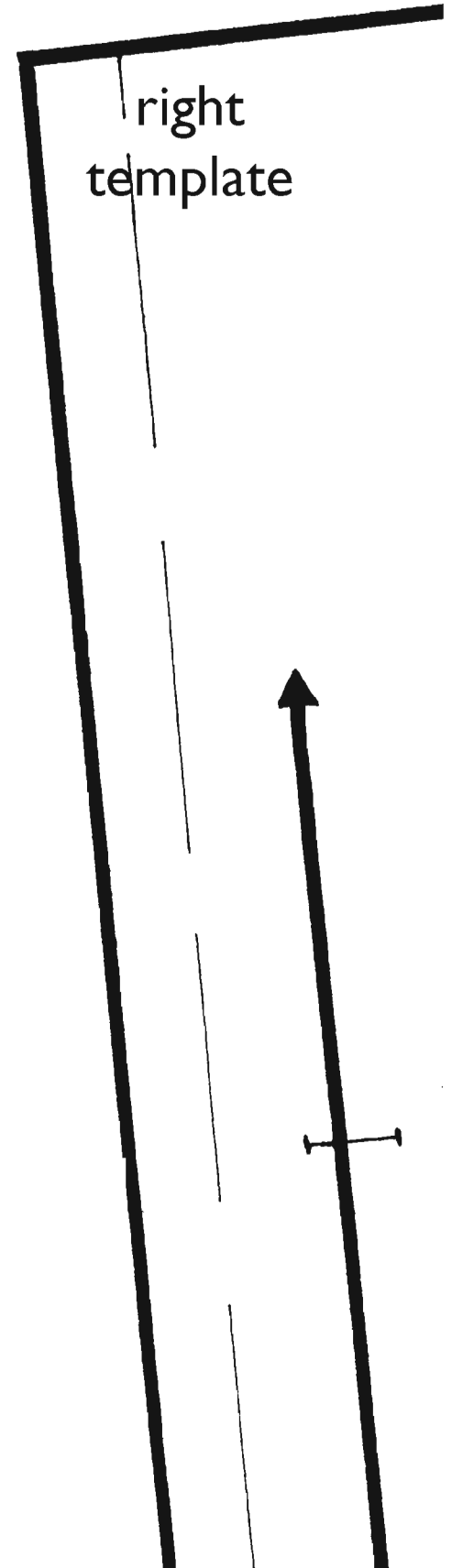
Print out each page  
and trim the edges to match  
the lines.

Trace the pattern onto  
tracing paper  
to insure smooth  
pattern lines.





3



First put a pin in the neck-shoulder dot of right template on top of the same neck-shoulder point of your pattern front. Pivot the template until its grain arrow is parallel with the grain arrow of your pattern. The center front lines may be slightly off because of pattern variations, but it will not matter. Pin securely and cut one layer of your blouse right front. Unpin the template.



Turn the pattern over so it is in the left front position. Pin the left template to it in the same manner as above. Cut out one layer of the blouse left front.

Mark the neck-shoulder dot on all four fabric layers (two fronts and two facings) and stitch small reinforcement stitches as shown on template. Slash to the point of reinforcement.

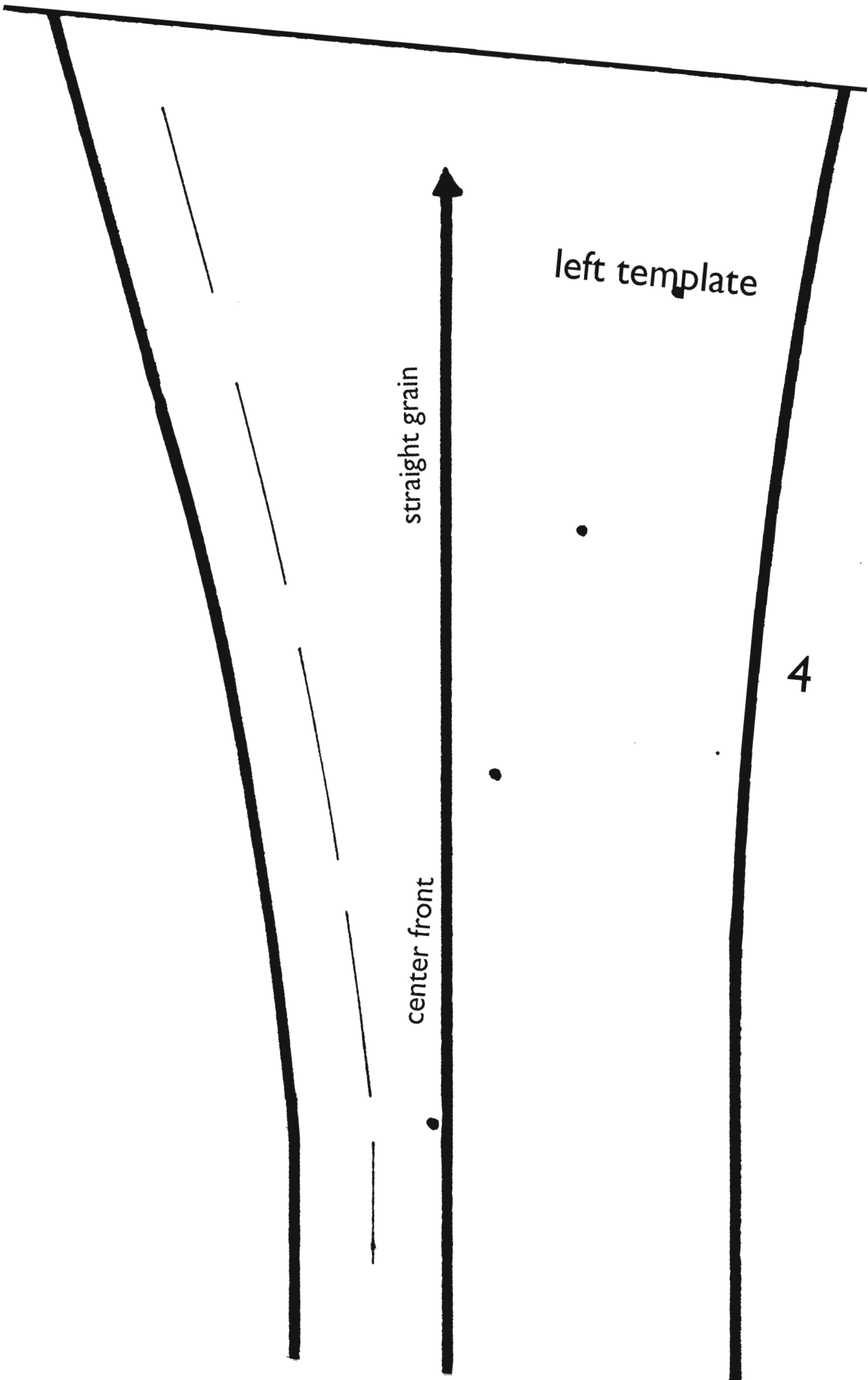
Stitch the center back seam in the two facing pieces. Press open. Serge or hem the long vertical edge of each facing to finish.

Staystitch the blouse back neckline  $\frac{1}{2}$ " from edge. Clip at intervals to stitching line



Stitch the blouse fronts together on the center back seam. Press open. The grain of these two little areas is different as explained in the chapter on shawl collars. It will be alright.

right  
template



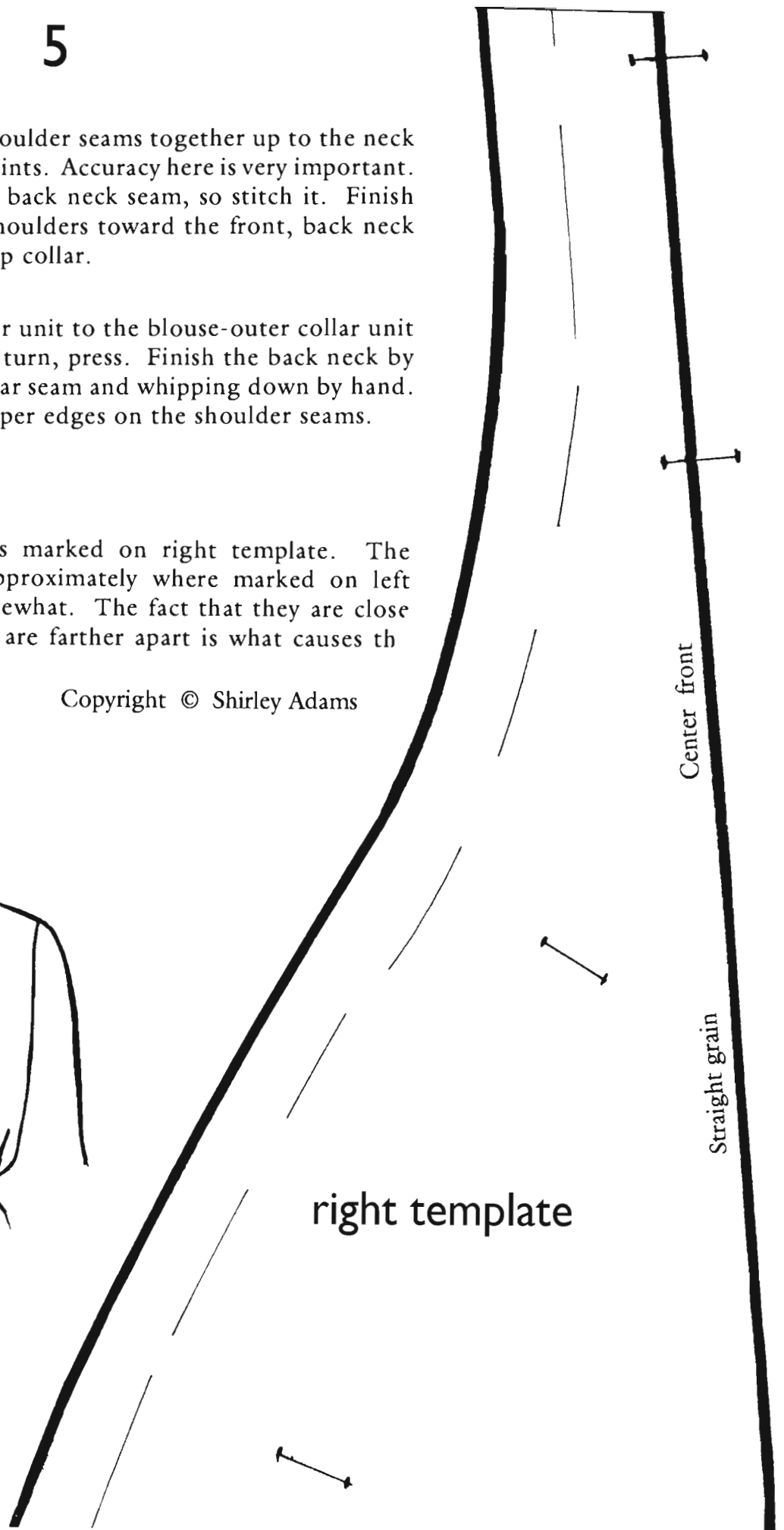
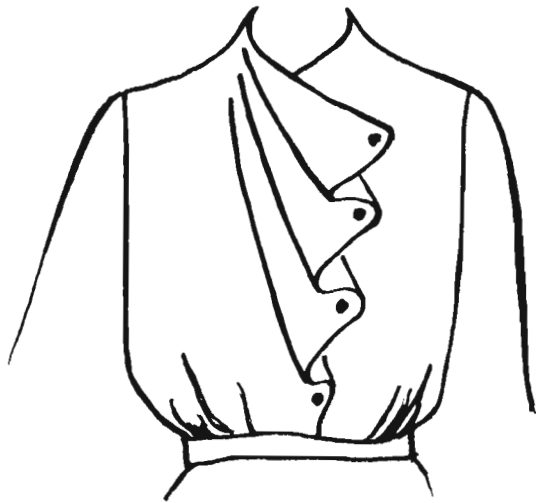
# 5

Stitch the front and back shoulder seams together up to the neck dots. Backstitch at those points. Accuracy here is very important. Now all that remains is the back neck seam, so stitch it. Finish shoulder seams and press shoulders toward the front, back neck seam up toward the stand up collar.

Stitch the facing-inner collar unit to the blouse-outer collar unit all around the edge. Trim, turn, press. Finish the back neck by turning under the inner collar seam and whipping down by hand. Do the same with facing upper edges on the shoulder seams.

Stitch buttonholes as marked on right template. The buttons will be stitched approximately where marked on left template, but may vary somewhat. The fact that they are close together while buttonholes are farther apart is what causes the cascade ruffle.

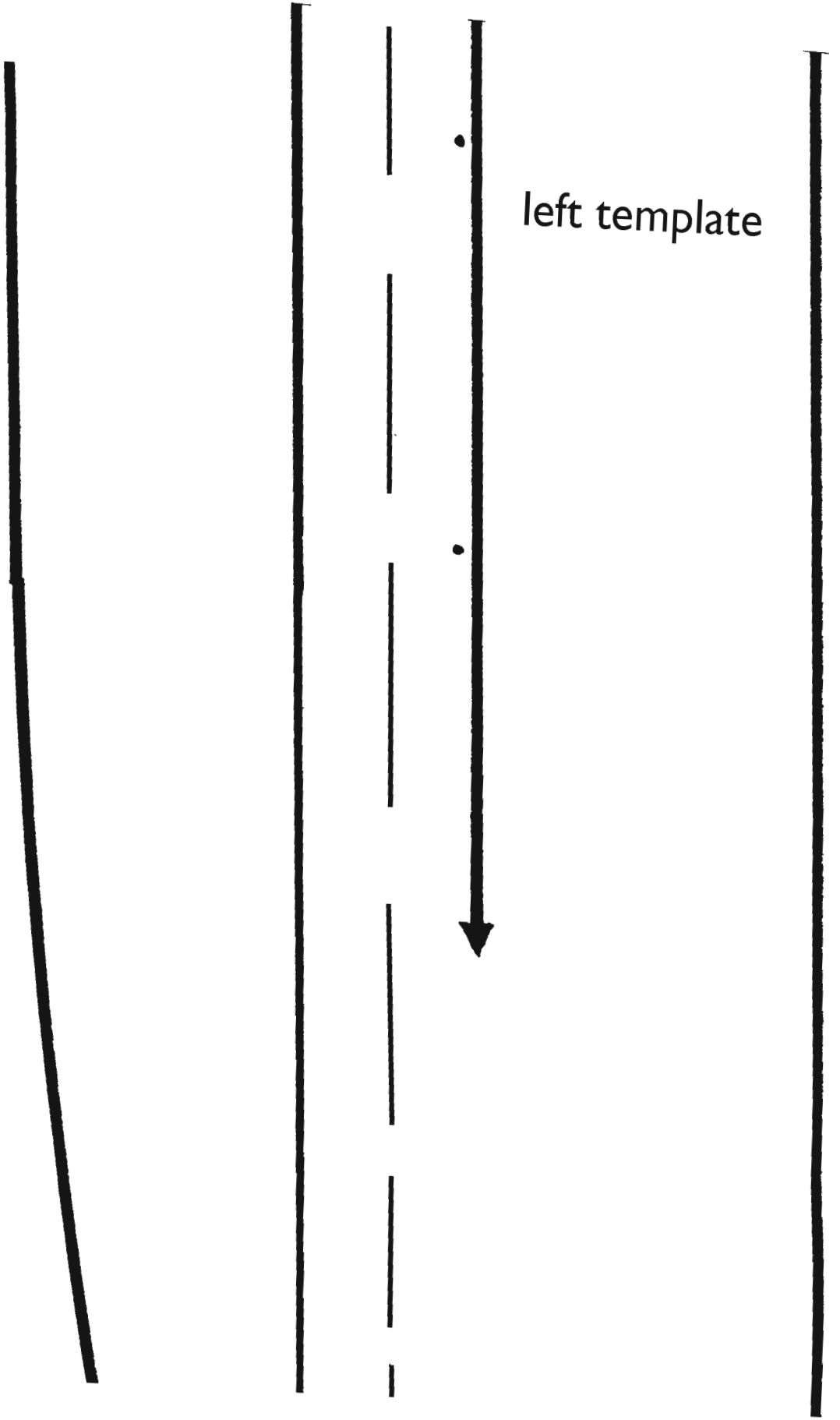
Copyright © Shirley Adams

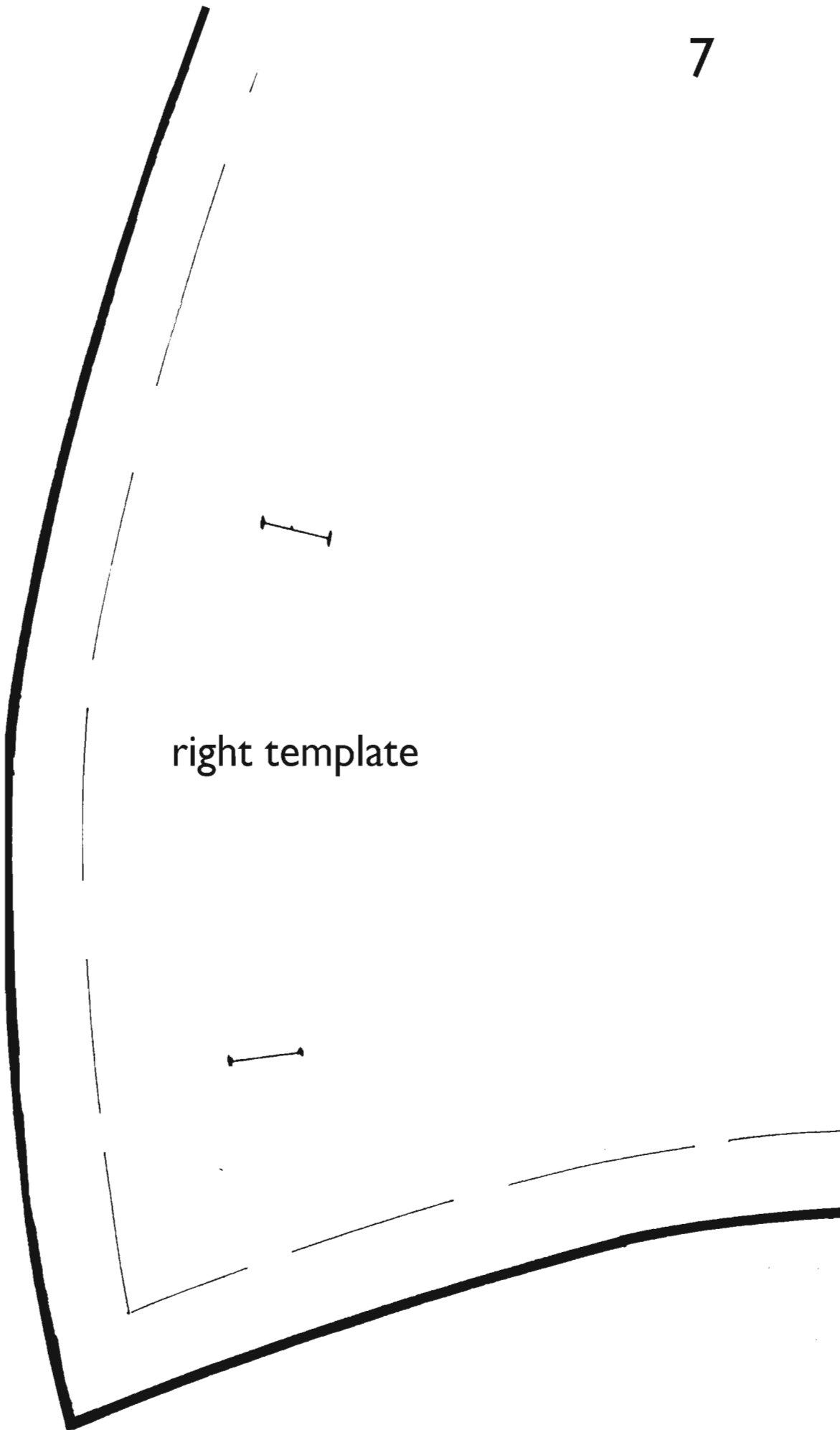


6

inside  
right template

left template





right template

8

Right Template

